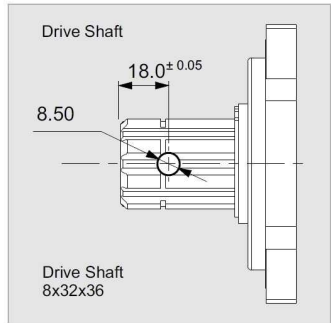
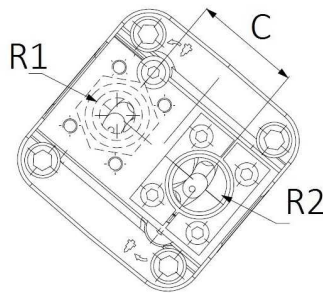
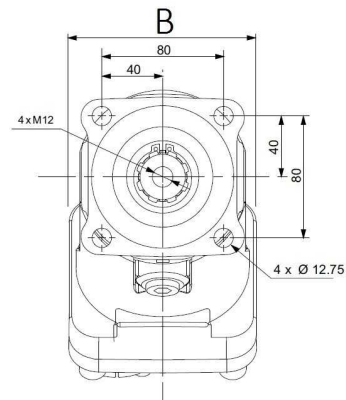
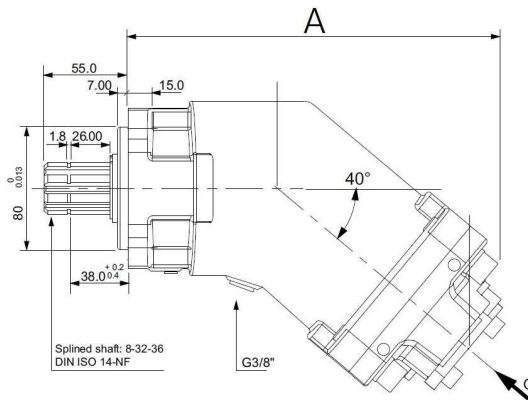


REF.....X	
BPT12 ----	46
BPT18 ----	46
BPT25 ----	46
BPT32 ----	46
BPT40 ----	46
BPT50 ----	46
BPT56 ----	46
BPT63 ----	46
BPT80 ----	64
BPT108 ----	64
BPT130 ----	64



Part n°	R1	R2	Working Pressure (bar)	Max. Press. (bar)	Max. torque (N.m)	Rotation speed (rpm)	cm ³ / rev	A	B	C
BPT12	3/4" BSP	3/4"	380	420	3508 (bar)	2900	12	196.7	108	54
BPT18	3/4" BSP	3/4"	380	420	114	2900	18	196.7	108	54
BPT25	3/4" BSP	3/4"	380	420	159	2750	25	196.7	108	54
BPT32	3/4" BSP	3/4"	380	420	204	2700	32	202.8	108	54
BPT40	3/4" BSP	3/4"	380	420	261	2550	40	202.8	108	54
BPT50	3/4" BSP	3/4"	380	420	318	2450	50	214.4	108	54
BPT63	3/4" BSP	3/4"	380	420	401	2300	63	214.4	108	54
BPT80	1" BSP	1"	380	420	509	2150	80	241.7	122	60
BPT108	1" BSP	1"	380	420	687	1900	108	241.7	122	60
BPT130	1" BSP	1"	380	420	827	1750	130	244	122	60

*** Review attached PDF***
Possibility to change the rotation of the pump following these instructions
For correct operation, the suction fitting that comes with the pump must be fitted.
Piston pumps operate at a minimum of 100 rpm